

# PAS Curved silo

*Galvanized and coated: double protected!*

## /// PAS MANURE STORAGE SYSTEMS

PAS manure storage systems is specialized in designing, building, inspecting all types of manure storage systems and covering. You can rely on more than 35 years of experience.

In addition to new construction, you can also contact PAS for **repairs**, **cleaning** and **inspections**. PAS builds and repairs throughout Europe with its own qualified personnel!

From application to inspection: a unique combination under one roof.



## /// PAS Curved silo: size and possibilities

The PAS Curved silo is available in volumes from 6 to 2,232 m<sup>3</sup> and in heights of 2.35, 3.10, 3.85, 4.60, 5.35 or 6.10 meters. The diameters range from ø 1.82 to ø 30.97m.

The tank panels are connected by special bolts, nuts and rings. The bolt head and the ring are pressed in the same shape as the wave and guarantee a much stronger connection. As a result, many plate connections suffice with a single bolt row. This simplifies and speeds up the assembly considerably and ensures huge savings in labor costs.

In short, a well-considered choice requires expert advice. Ask for the many possibilities!

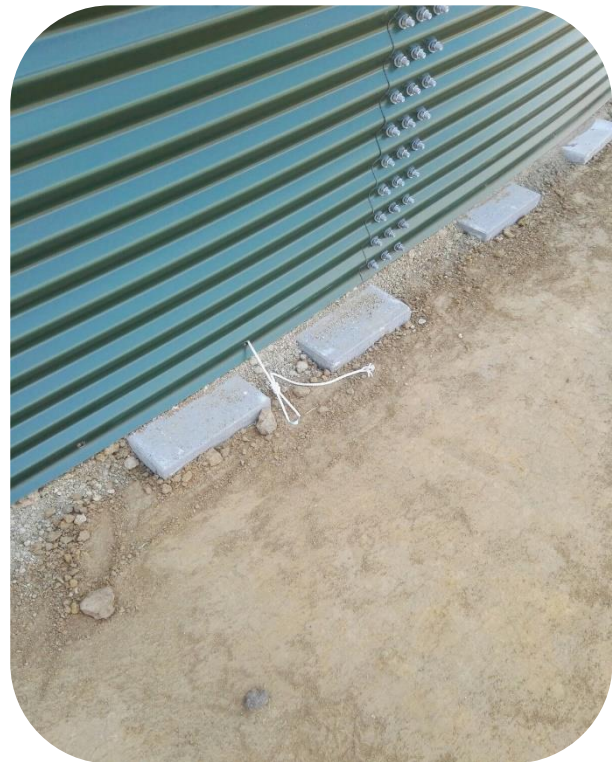
The PAS Golfplaatsilo is available in any RAL color.

Due to the flexible dimensions, the silo can be placed almost anywhere on any surface.

The tank construction is composed of sheets with a profile and arched in the right radius. The plates are connected to each other by special rounded bolts.

The galvanized sheets and an extra coating for protection make the silo a sustainable solution for the storage of manure.

## A sustainable and maintenance-free investment!





# PAS Curved silo

*Galvanized and coated: double protected!*

## Characteristics PAS Curved silo

- Higher steel quality S 350 GD for more strength and tank height up to 6.10 meters
- Newly developed metal coating (CORRENDER ZM), 70% less zinc use and higher rust resistance, no white rust
- Environmentally friendly chromatographic free coating (COLOFOR plus)
- Available as standard in light gray RAL 7038 and dark green RAL 6009

New developed bolt set with greater tensile strength and fewer bolt sets per tank

- Wall provided with felt, lining consisting of manure-resistant foil.
- Equipped with filling / removal station 6 "
- Covered with floating deck

### /// PAS Curved silo: Montage

Tiles are placed on a clean sand bed. On this the manure silo plate for plate (due to the low weight) is built by hand.

On the inside of the plates there is a felt to protect the inner bag (lining) or closed manure bag.

The silo is filled up with soil on the outside.

In addition, the silo is provided with a membrane blowing hood or a floating deck.



Diameter	Hoogte 2,35	Hoogte 3,10	Hoogte 3,85m	Hoogte 4,60m	Hoogte 5,35m	Hoogte 6,10m
ø 1,82 m	6 m³	8 m³	9 m³	11 m³	13 m³	15 m³
ø 2,73 m	13 m³	17 m³	21 m³	26 m³	30 m³	35 m³
ø 3,64 m	22 m³	30 m³	38 m³	46 m³	54 m³	61 m³
ø 4,55 m	35 m³	47 m³	59 m³	72 m³	84 m³	96 m³
ø 5,46 m	50 m³	68 m³	85 m³	103 m³	121 m³	138 m³
ø 6,38 m	69 m³	93 m³	117 m³	141 m³	165 m³	189 m³
ø 7,29 m	90 m³	121 m³	152 m³	184 m³	215 m³	246 m³
ø 8,20 m	114 m³	153 m³	193 m³	232 m³	272 m³	312 m³
ø 9,11 m	140 m³	189 m³	238 m³	287 m³	336 m³	385 m³
ø 10,02 m	170 m³	229 m³	288 m³	347 m³	406 m³	465 m³
ø 10,93 m	202 m³	272 m³	342 m³	413 m³	483 m³	554 m³
ø 11,84 m	237 m³	319 m³	402 m³	484 m³	567 m³	650 m³
ø 12,75 m	275 m³	370 m³	466 m³	562 m³	658 m³	753 m³
ø 13,66 m	315 m³	425 m³	535 m³	645 m³	755 m³	865 m³
ø 14,57 m	358 m³	484 m³	609 m³	734 m³	859 m³	984 m³
ø 15,48 m	405 m³	546 m³	687 m³	828 m³	969 m³	1110 m³
ø 16,39 m	454 m³	612 m³	770 m³	928 m³	1087 m³	
ø 17,31 m	506 m³	682 m³	859 m³	1035 m³	1212 m³	
ø 18,22 m	561 m³	756 m³	952 m³	1147 m³		
ø 19,13 m	618 m³	834 m³	1049 m³	1265 m³		
ø 20,04 m	678 m³	915 m³	1151 m³	1388 m³		
ø 20,95 m	741 m³	1000 m³	1258 m³			
ø 21,86 m	807 m³	1088 m³	1370 m³			
ø 22,77 m	875 m³	1181 m³	1486 m³			
ø 23,68 m	947 m³	1277 m³	1607 m³			
ø 24,59 m	1021 m³	1377 m³	1733 m³			
ø 25,50 m	1098 m³	1481 m³	1915 m³			
ø 26,41 m	1178 m³	1589 m³	2055 m³			
ø 27,32 m	1260 m³	1700 m³				
ø 28,24 m	1347 m³	1816 m³				
ø 29,15 m	1435 m³	1935 m³				
ø 30,06 m	1526 m³	2058 m³				
ø 30,97 m	1620 m³					